

# PHILIPS

sense **and** simplicity

## EnPROVE – Workflow and Tooling for Professional Lighting Retrofits

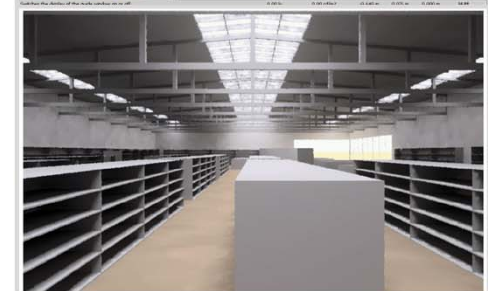
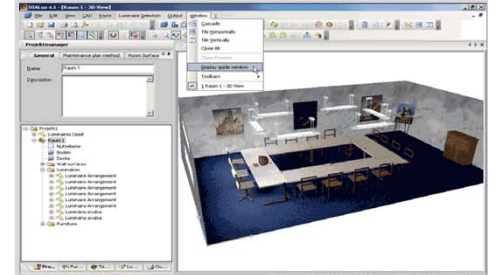
IEA-SHC Task 50 - 1st Industry Workshop  
March 20, 2013; Lund, Sweden

Peter Fuhrmann - Philips Research



## Outline

- Challenges in lighting retrofits
- Advanced lighting retrofit delivery
- Classification of advanced lighting retrofits
- Case Studies: Workflow and tooling needs
  - Philips retrofit (office/industry)
  - FP7 EnPROVE
  - Philips advanced renovation (retail)



# Challenges in Lighting Retrofits

*Mission of IEA-SHC Task 50*

Lack of awareness of retrofit potentials	2	3	
Confusing variety of retrofit solutions for lighting systems	2	3	
Missing proven evidence on the saving potential of sound design solutions using new emerging technologies	2	3	
Partly lacking technical and constructive solutions	1	2	3
Missing of integrated rating methods on lighting energy and operational costs	2	3	
Lack of incentives		3	

Lighting retrofits can advance in

- the technical retrofit solution 1
- the retrofit workflow & service 2
- the lighting retrofit tooling 3

# Challenges in Lighting Retrofits

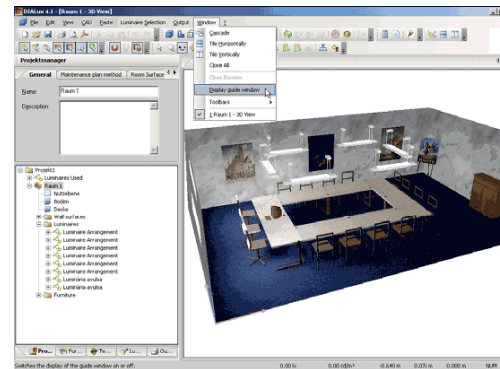
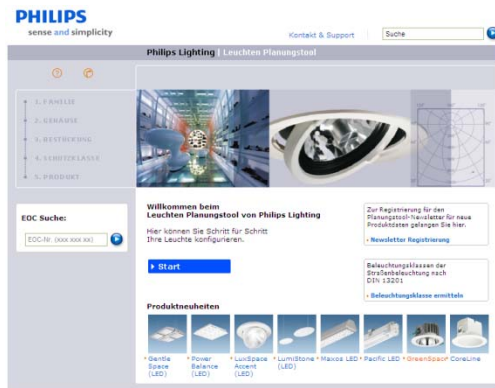


# ‘Standard Specifier/Design’ Way-of Working

*‘When you know what you want/need’*



	Program	Plug-in
Indoor & outdoor lighting	DIALux / Relux	Philips Product Selector
Road lighting	DIALux / Relux	Philips Product Selector
High end visualization	Autodesk 3ds MAX design	Philips Product Selector
Area lighting	Calculux Area	Philips Product Selector



## Crucial tooling components

- Product selection support and vendor libraries
- Lighting design and simulation
- Lighting visualization

# Advanced Lighting (Service) Way-of Working

*,When awareness creation, potential assessment, consultancy... is needed'*

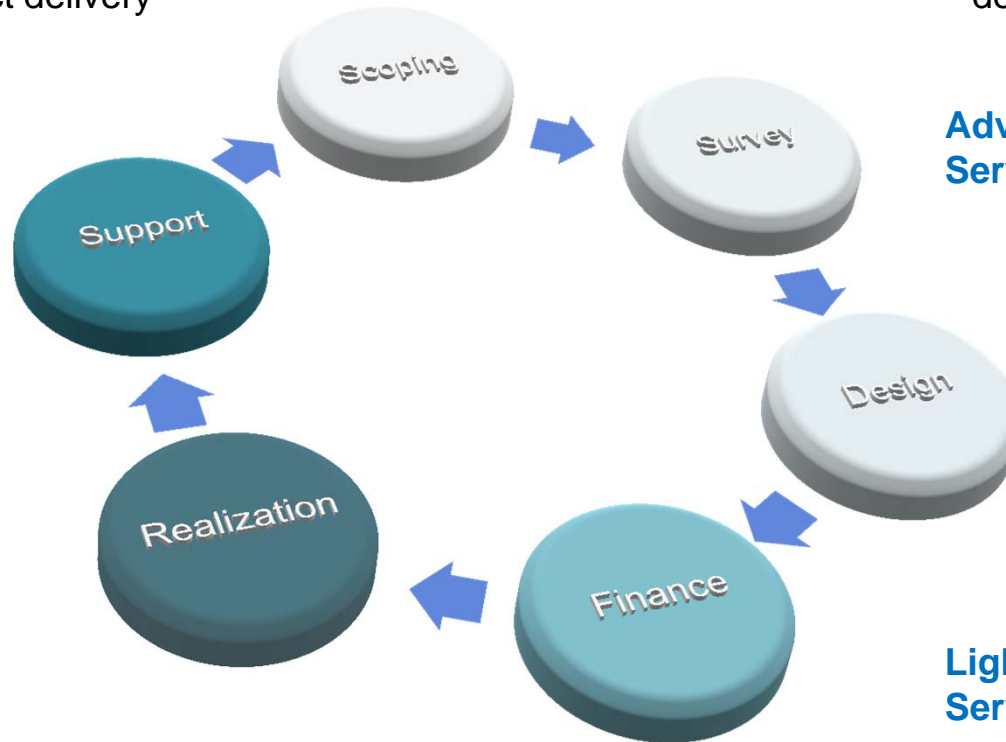
Offer a ,service experience' around retrofitted lighting and turn-key project delivery

**Scoping & Quick Scan**

Engage and accompany customer throughout all steps of the decision process

**Lifecycle Services**

**Advisory Services**



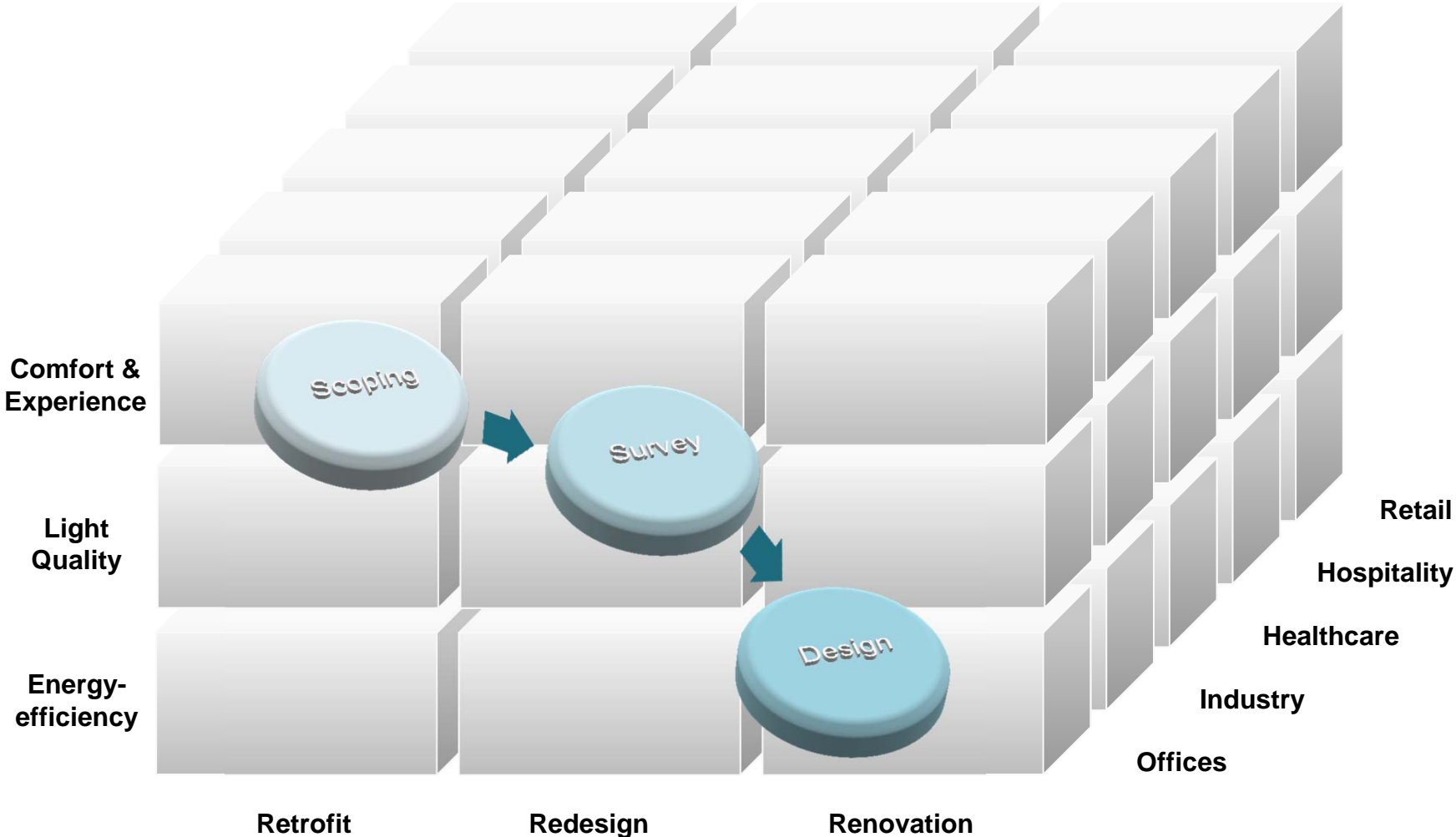
**Project Services**

**Lighting Capital Services**

Tailor lighting solution and business case to the customer's needs

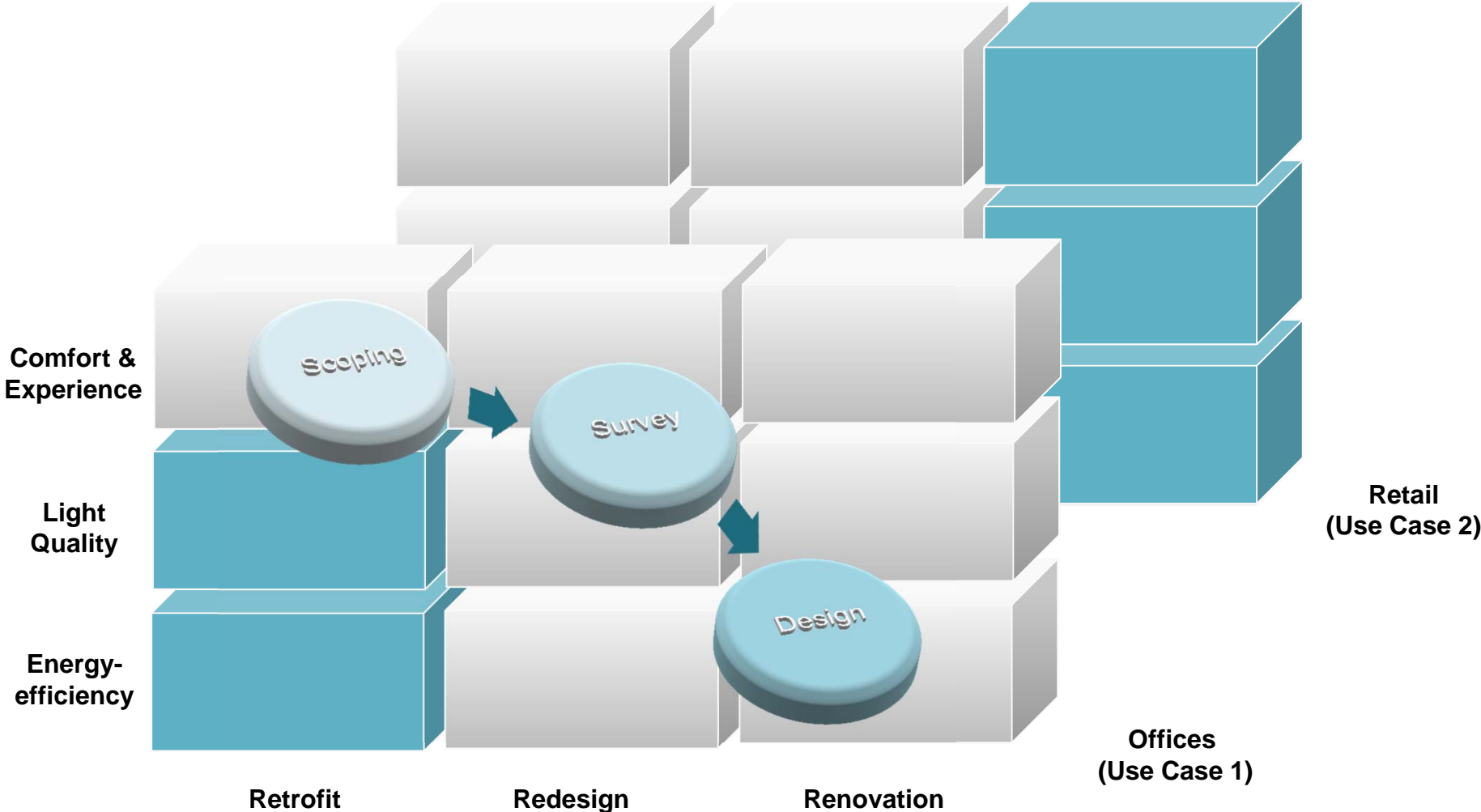
# Classification of Advanced Lighting Retrofits

*IEA Task 50 Discussion*



# Use Case-driven Tooling Review

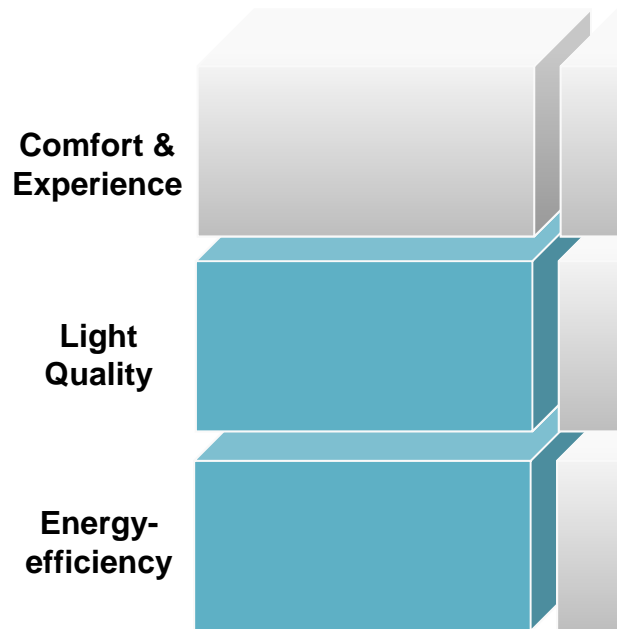
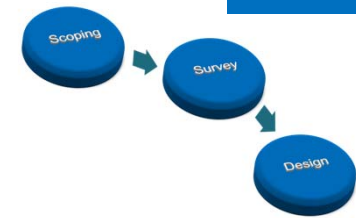
*(1) Office Retrofitting and (2) Retail Renovation*





# Use Case 1: Office Retrofitting

*‘Fit-for-Purpose Lighting with best Payback’*



Offices

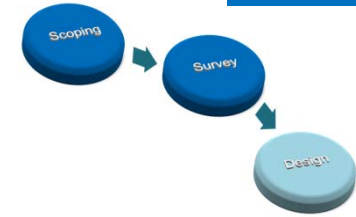
Retrofit

Redesign

Renovation

# Survey and Auditing Tooling

*Need for (cost-)efficient data acquisition and presentation*



01. Reception



05. Meeting rooms



02. Corridors



06. Break out areas



03. Open plan office



07. Façade



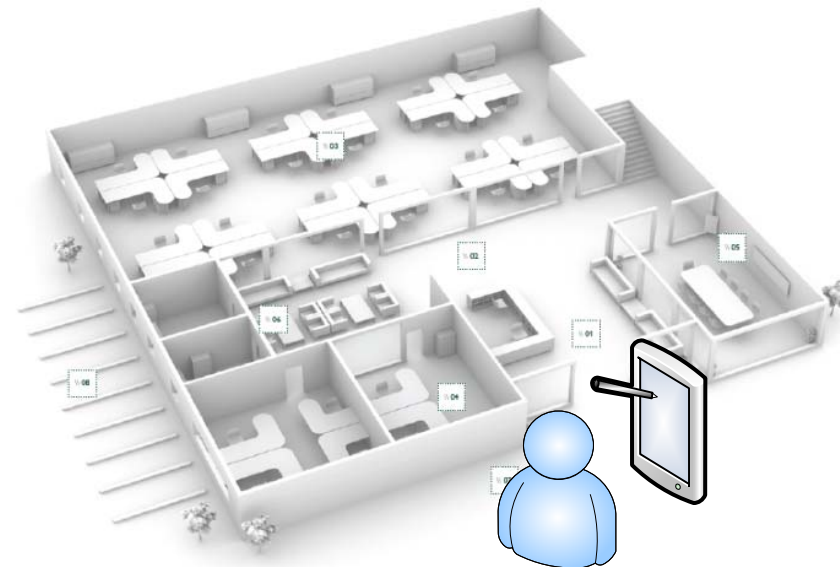
04. Cell office



08. Parking

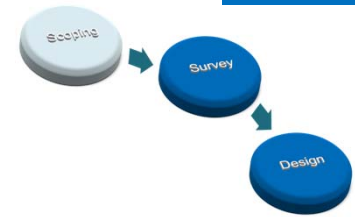
Mobile application facilitating the time/effort-efficient data acquisition for

- all current lighting equipment (asset inventory)
- electrical lighting installation situation
- all usage and operational parameters
- all spatial and environmental information (enabling lighting design and simulations)

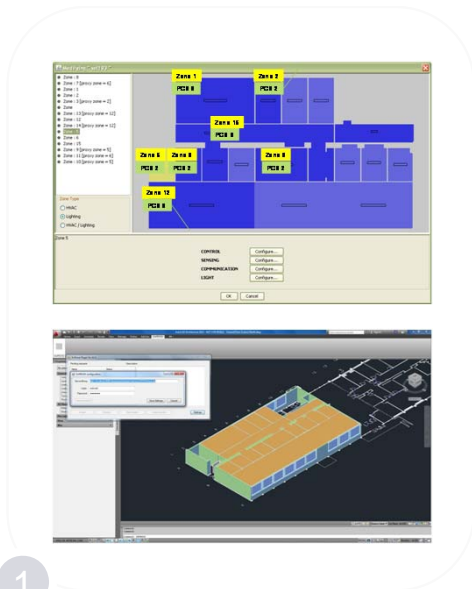


# EnPROVE Retrofit Advisor Solution

FP7 [www.enprove.eu](http://www.enprove.eu)

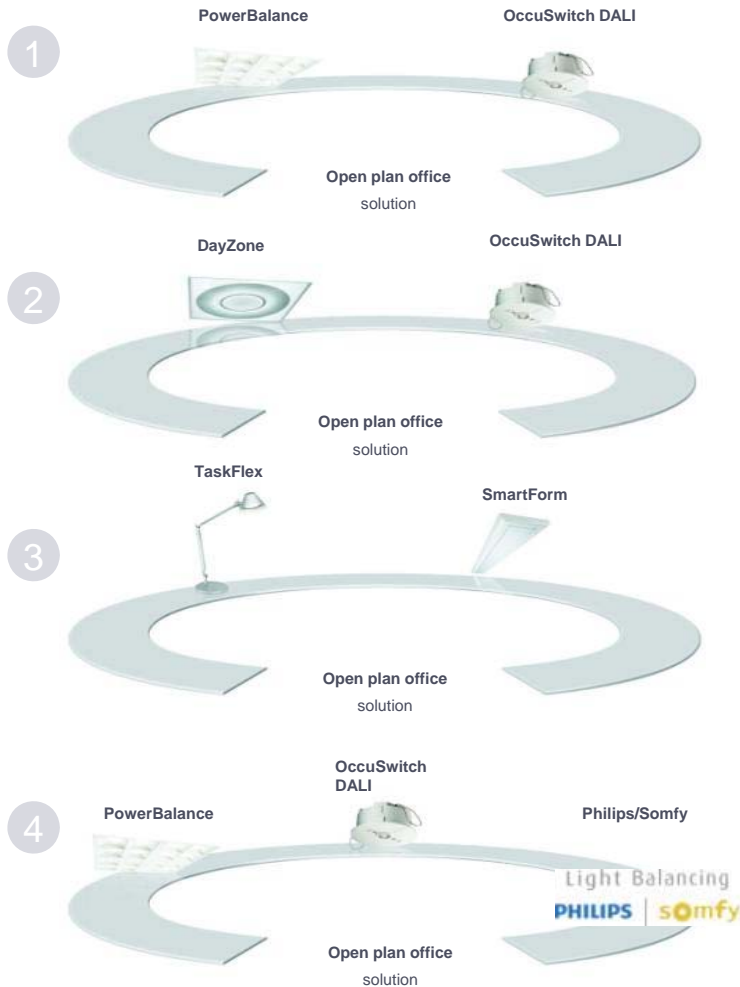
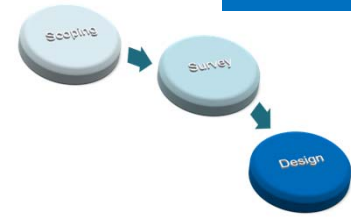


- 1 Re-use and utilization of available building and installation data
- 2 Sensor-based precise usage and performance data analytics
- 3 Product modeling for automatic lighting controls design



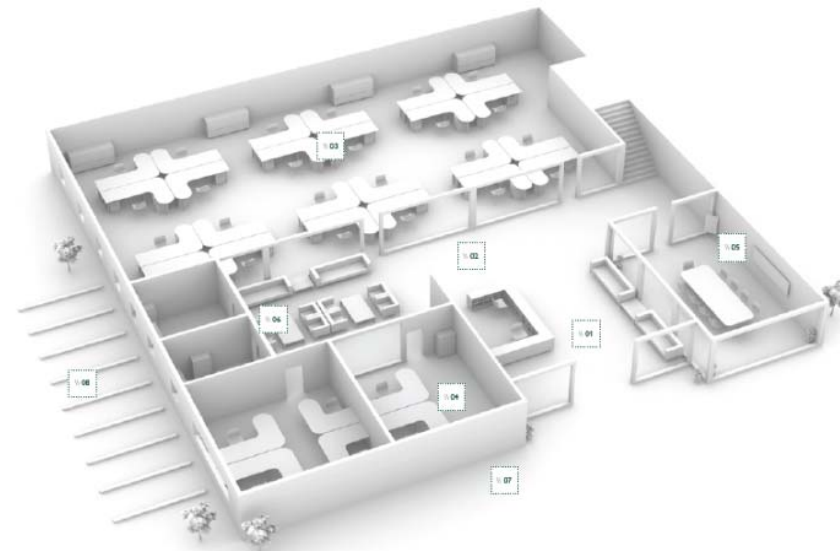
# Solution Design Tooling

## Need for Scenario-Solution Mapping



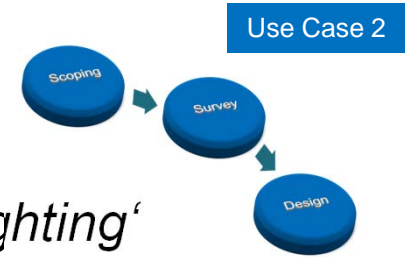
Solution design and decision tooling – determining the appropriate solution for each area

- **Solution 1** Energy-efficient lighting design
- **Solution 2** Inspiring and comfortable lighting
- **Solution 3** Bringing light to the desk
- **Solution 4** Linking lights & blinds



# Use Case 2: Total Green Store\*

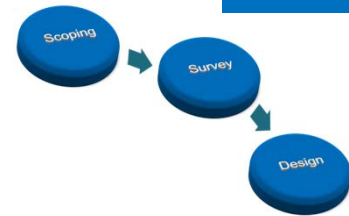
*„Delivering always ideal Combination of Daylight and LED Lighting“*



**Retail**

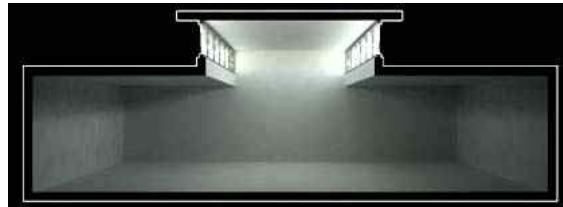
**Renovation**

- Comfort & Experience
- Light Quality
- Energy-efficiency

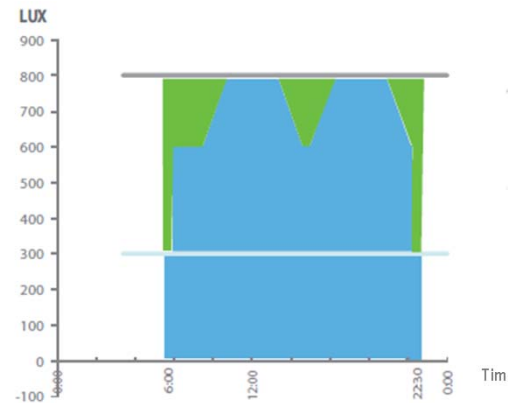
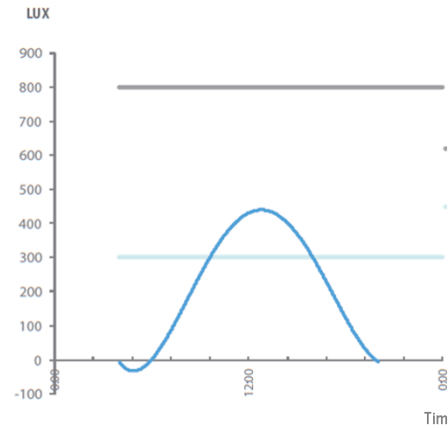


# Hybrid LED/Daylight Solutions

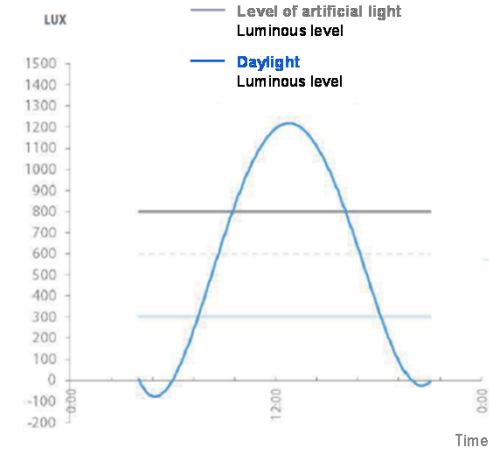
## Skylight/LED Integration



## Intelligent Lighting Controls



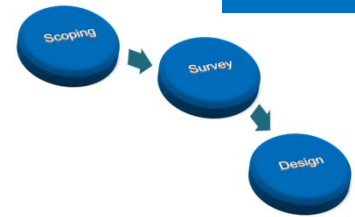
## Daylight-Harvesting



## Peak-Time Lighting Control

- Level of artificial light Luminous level
- Artificial light dimmed Peak-Time-Dimming
- Saving potential With Peak-Time-Dimming

- Store times:**
- 06:00 – 07:00 Uhr Refilling of shelves
  - 07:00 – 08:00 Uhr Few customers
  - 09:00 – 13:00 Uhr A lot of customers
  - 14:00 – 17:00 Uhr Few customers
  - 18:00 – 20:00 Uhr A lot of customers
  - 20:00 – 22:00 Uhr Few customers
  - 22:00 – 22:30 Uhr Light for cleaning



# Survey-Design-Analysis Tooling

## *Need for detailed Lighting/Climate/Load Analysis*

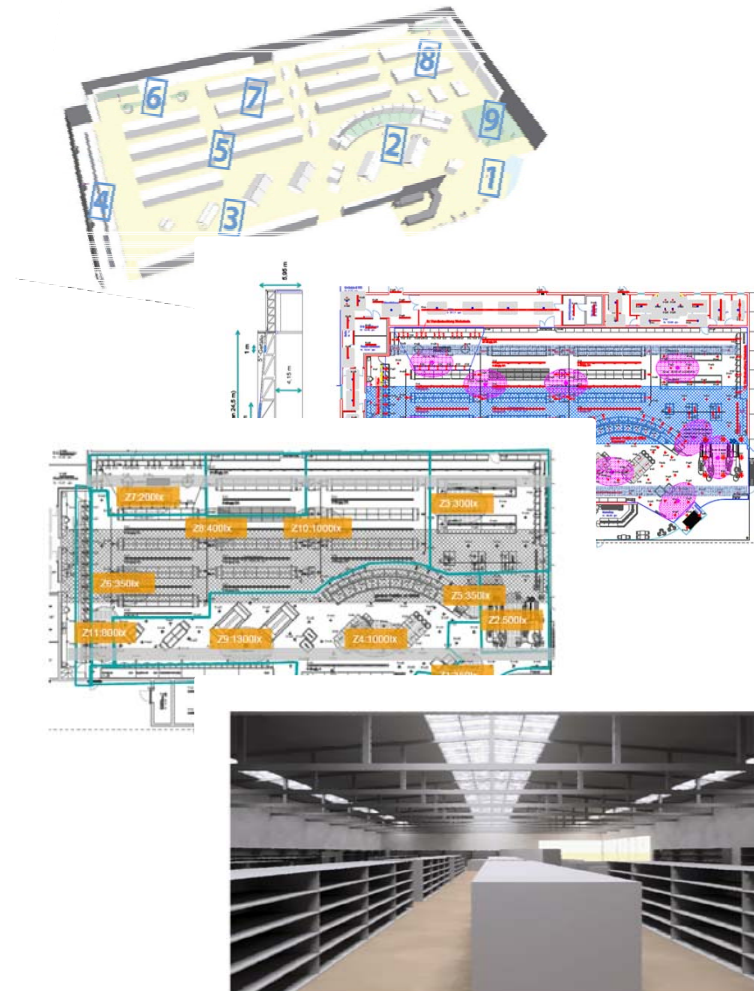
Energy scan for artificial lighting for existing building

### Concept

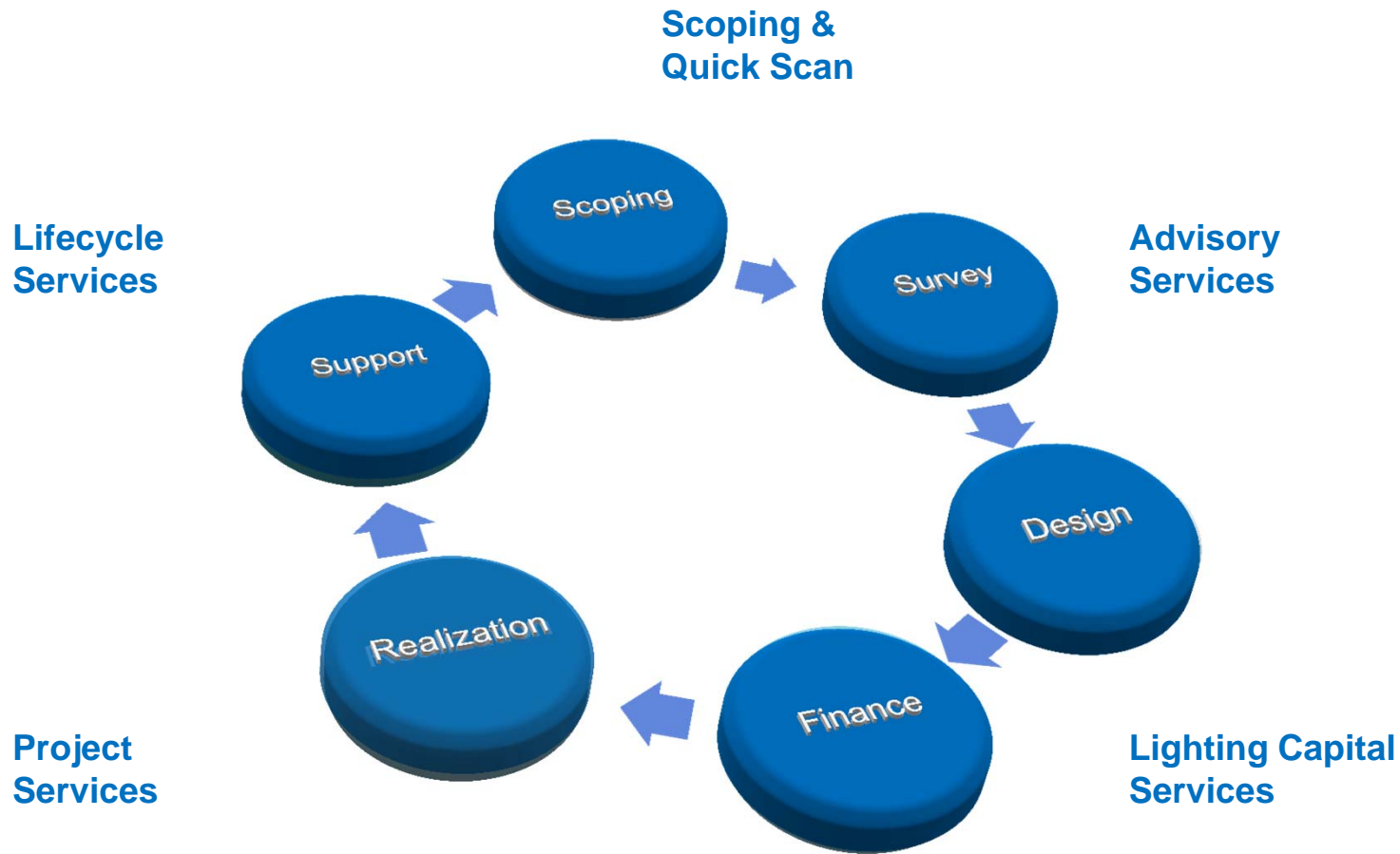
- Draft of the artificial lighting concept including all lighting controls components
- Daylight concept and skylight simulation including annual energy savings with daylight-controlled artificial light – based on individual building parameters (Daylight-Survey)

### Business Case Creation

- Arithmetical simulation of the energy savings through constant light-output- and peak-time lighting controls based on individual project parameters
- Total cost of ownership analysis including initial investment, energy- and maintenance costs



# Green Evolution\*: Workflow & Service Chain for Advanced Lighting Retrofitting



\* Green Evolution: Philips service business proposition for professional lighting retrofits



# Green Evolution\*: Workflow & Service Chain for Advanced Lighting Retrofitting



**THANK YOU FOR YOUR ATTENTION!**

Contact: [peter.fuhrmann@philips.com](mailto:peter.fuhrmann@philips.com)